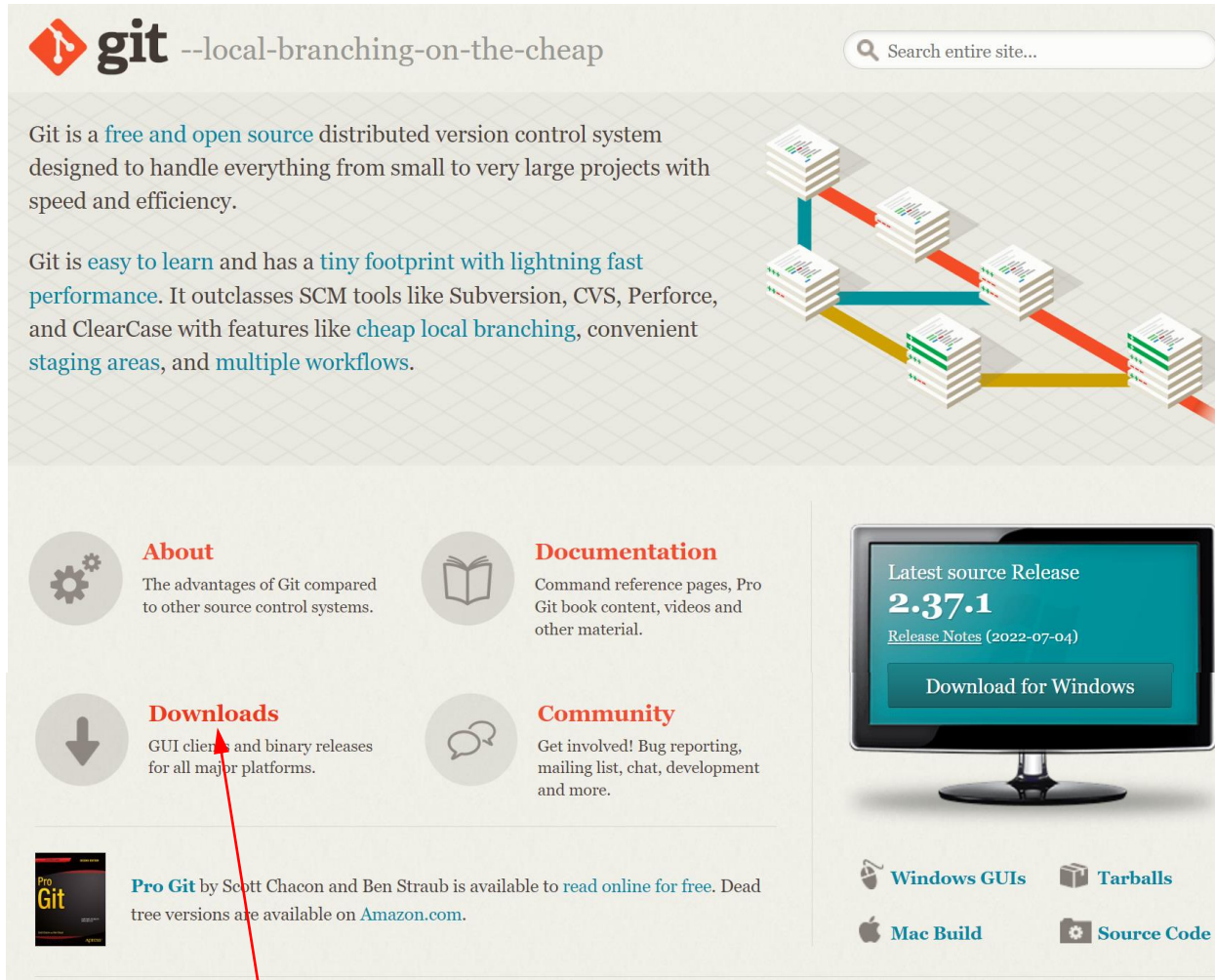
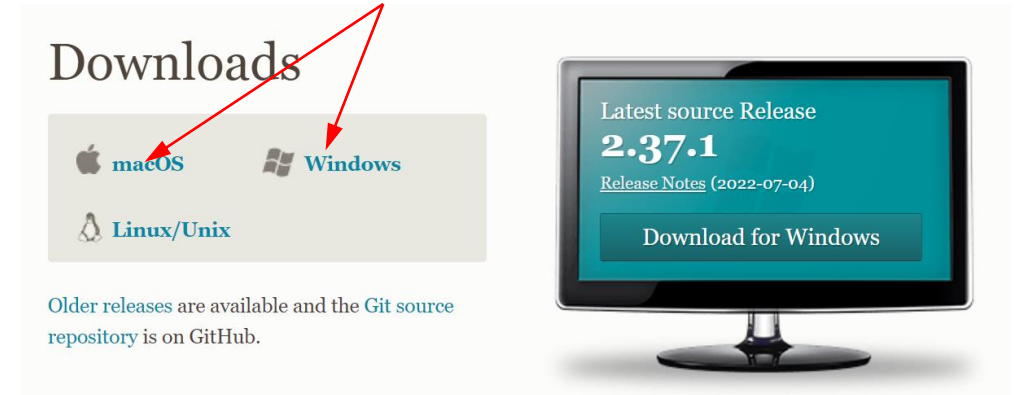


① <https://git-scm.com/> にアクセス

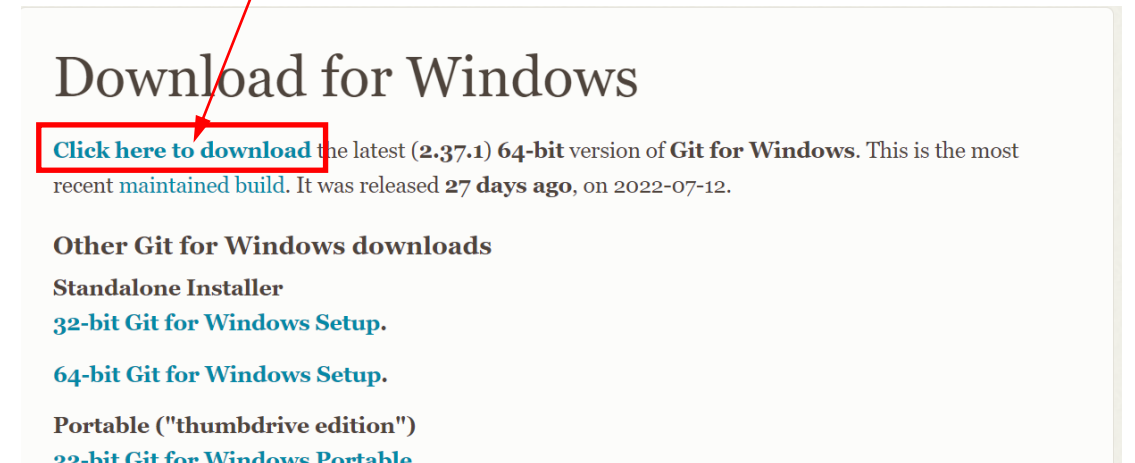


② クリック

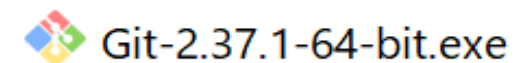
③ 選択してクリック

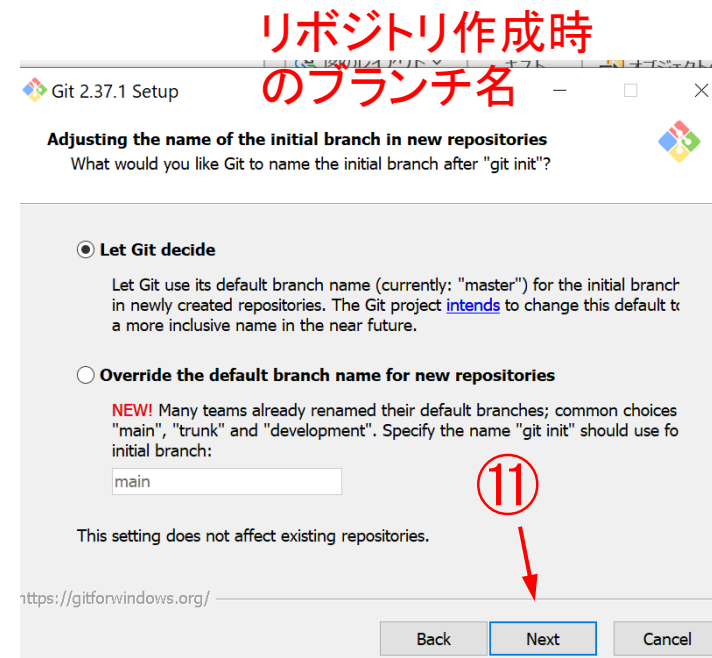
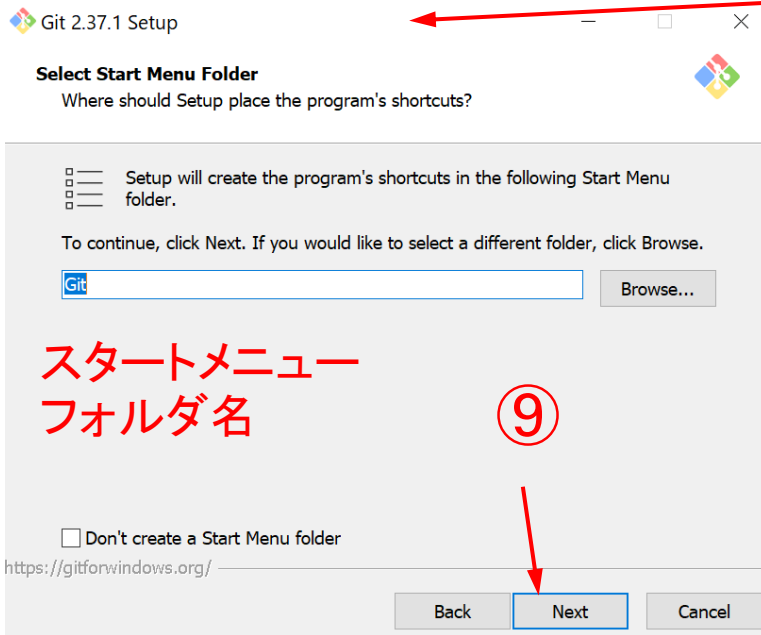
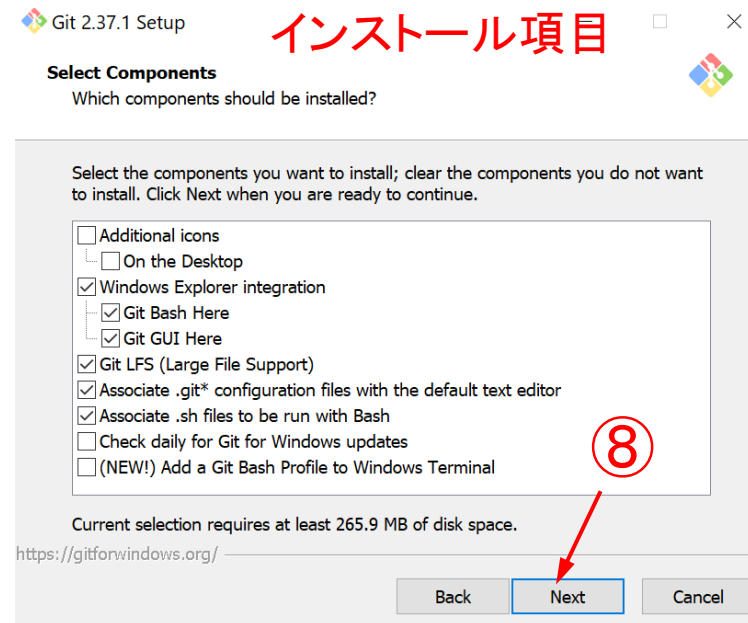
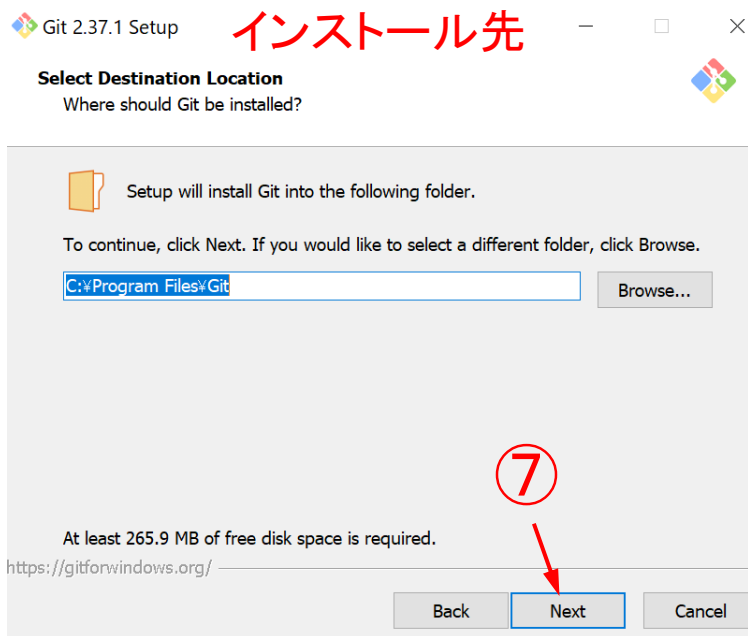
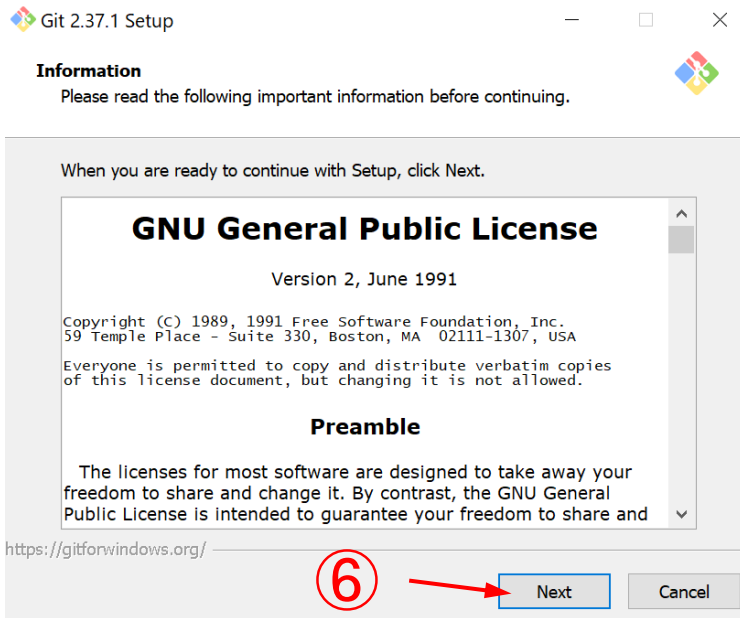


④ クリック



⑤ ダウンロードした実行ファイルクリック





Adjusting your PATH environment

How would you like to use Git from the command line?

☐ Use Git from Git Bash only

This is the most cautious choice as your PATH will not be modified at all. You only be able to use the Git command line tools from Git Bash.

☒ Git from the command line and also from 3rd-party software

(Recommended) This option adds only some minimal Git wrappers to your PATH to avoid cluttering your environment with optional Unix tools. You will be able to use Git from Git Bash, the Command Prompt and the Win PowerShell as well as any third-party software looking for Git in PATH.

☐ Use Git and optional Unix tools from the Command Prompt

Both Git and the optional Unix tools will be added to your PATH.
Warning: This will override Windows tools like "find" and "sort". Only use this option if you understand the implications.

12

<https://gitforwindows.org/>

Back

Next

Cancel

Choosing the SSH executable

Which Secure Shell client program would you like Git to use?

☒ Use bundled OpenSSH

This uses ssh.exe that comes with Git.

☐ Use external OpenSSH

NEW! This uses an external ssh.exe. Git will not install its own OpenSSH (and related) binaries but use them as found on the PATH.

13

<https://gitforwindows.org/>

Back

Next

Cancel

Choosing HTTPS transport backend

Which SSL/TLS library would you like Git to use for HTTPS connections?

☒ Use the OpenSSL library

Server certificates will be validated using the ca-bundle.crt file.

☐ Use the native Windows Secure Channel library

Server certificates will be validated using Windows Certificate Stores. This option also allows you to use your company's internal Root CA certificates distributed e.g. via Active Directory Domain Services.

14

<https://gitforwindows.org/>

Back

Next

Cancel

Configuring the line ending conversions

How should Git treat line endings in text files?

改行コードの設定

☒ Checkout Windows-style, commit Unix-style line endings

Git will convert LF to CRLF when checking out text files. When committing text files, CRLF will be converted to LF. For cross-platform projects, this is the recommended setting on Windows ("core.autocrlf" is set to "true").

☐ Checkout as-is, commit Unix-style line endings

Git will not perform any conversion when checking out text files. When committing text files, CRLF will be converted to LF. For cross-platform project this is the recommended setting on Unix ("core.autocrlf" is set to "input").

☐ Checkout as-is, commit as-is

Git will not perform any conversions when checking out or committing text files. Choosing this option is not recommended for cross-platform projects ("core.autocrlf" is set to "false").

15

<https://gitforwindows.org/>

Back

Next

Cancel

Configuring the terminal emulator to use with Git Bash

Which terminal emulator do you want to use with your Git Bash?

Git Bashのエミュレータ(Windows版)

☒ Use MinTTY (the default terminal of MSYS2)

Git Bash will use MinTTY as terminal emulator, which sports a resizable window non-rectangular selections and a Unicode font. Windows console programs (s as interactive Python) must be launched via `winpty` to work in MinTTY.

☐ Use Windows' default console window

Git will use the default console window of Windows ("cmd.exe"), which works with Win32 console programs such as interactive Python or node.js, but has a very limited default scroll-back, needs to be configured to use a Unicode font order to display non-ASCII characters correctly, and prior to Windows 10 its window was not freely resizable and it only allowed rectangular text selection:

16

<https://gitforwindows.org/>

Back

Next

Cancel

Choose the default behavior of `git pull`

What should `git pull` do by default?

git pullコマンドの挙動

☒ Default (fast-forward or merge)

This is the standard behavior of `git pull`: fast-forward the current branch to the fetched branch when possible, otherwise create a merge commit.

☐ Rebase

Rebase the current branch onto the fetched branch. If there are no local commits to rebase, this is equivalent to a fast-forward.

☐ Only ever fast-forward

Fast-forward to the fetched branch. Fail if that is not possible.

17

<https://gitforwindows.org/>

Back

Next

Cancel

Choose a credential helper

Which credential helper should be configured?

☒ **Git Credential Manager**

Use the [cross-platform Git Credential Manager](#).
See more information about the future of Git Credential Manager [here](#).

☐ **None**

Do not use a credential helper.

18

<https://gitforwindows.org/>

Back

Next

Cancel

Configuring extra options

Which features would you like to enable?

☒ **Enable file system caching**

File system data will be read in bulk and cached in memory for certain operations ("core.fscache" is set to "true"). This provides a significant performance boost.

☐ **Enable symbolic links**

Enable [symbolic links](#) (requires the SeCreateSymbolicLink permission). Please note that existing repositories are unaffected by this setting.

19

<https://gitforwindows.org/>

Back

Next

Cancel

Configuring experimental options

These features are developed actively. Would you like to try them?

☐ **Enable experimental support for pseudo consoles.**

(NEW!) This allows running native console programs like Node or Python in a Git Bash window without using winpty, but it still has known bugs.

☐ **Enable experimental built-in file system monitor**

(NEW!) Automatically run a [built-in file system watcher](#), to speed up common operations such as ``git status``, ``git add``, ``git commit``, etc in worktrees containing many files.

20

<https://gitforwindows.org/>

Back

Install

Cancel

Completing the Git Setup Wizard

Setup has finished installing Git on your computer. The application may be launched by selecting the installed shortcuts.

Click Finish to exit Setup.

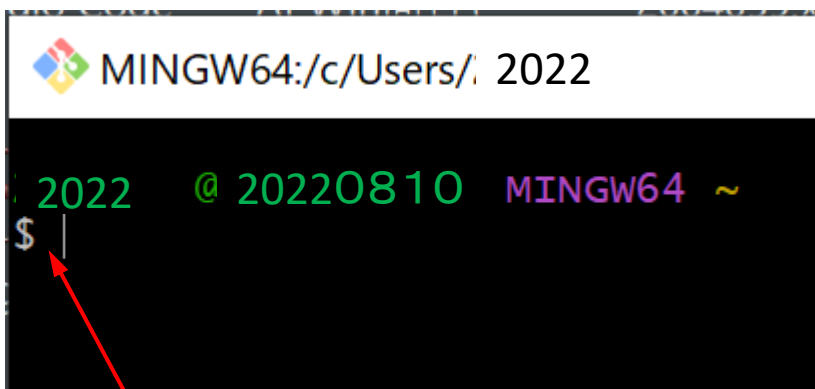
☐ Launch Git Bash

☒ View Release Notes

21

Finish

- ②②Windowsスタートメニューで
Git Bashをクリック
WindowsでもmacOsでも
同じコマンドで実行できる



\$ プロンプト

コマンド ls ディレクトリの内容表示

```
$ ls
'3D objects'/
AppData/
'Application Data'@
Contacts/
Cookies@
DATA/
Documents/
Downloads/
```

コマンド ls -a オプション「.」で始まるディレクトリを表示

```
$ ls -a Documents
./ ../ 'My Music'@ 'My Pictures'@ 'My Videos'@
```

コマンド pwd 絶対パスを表示

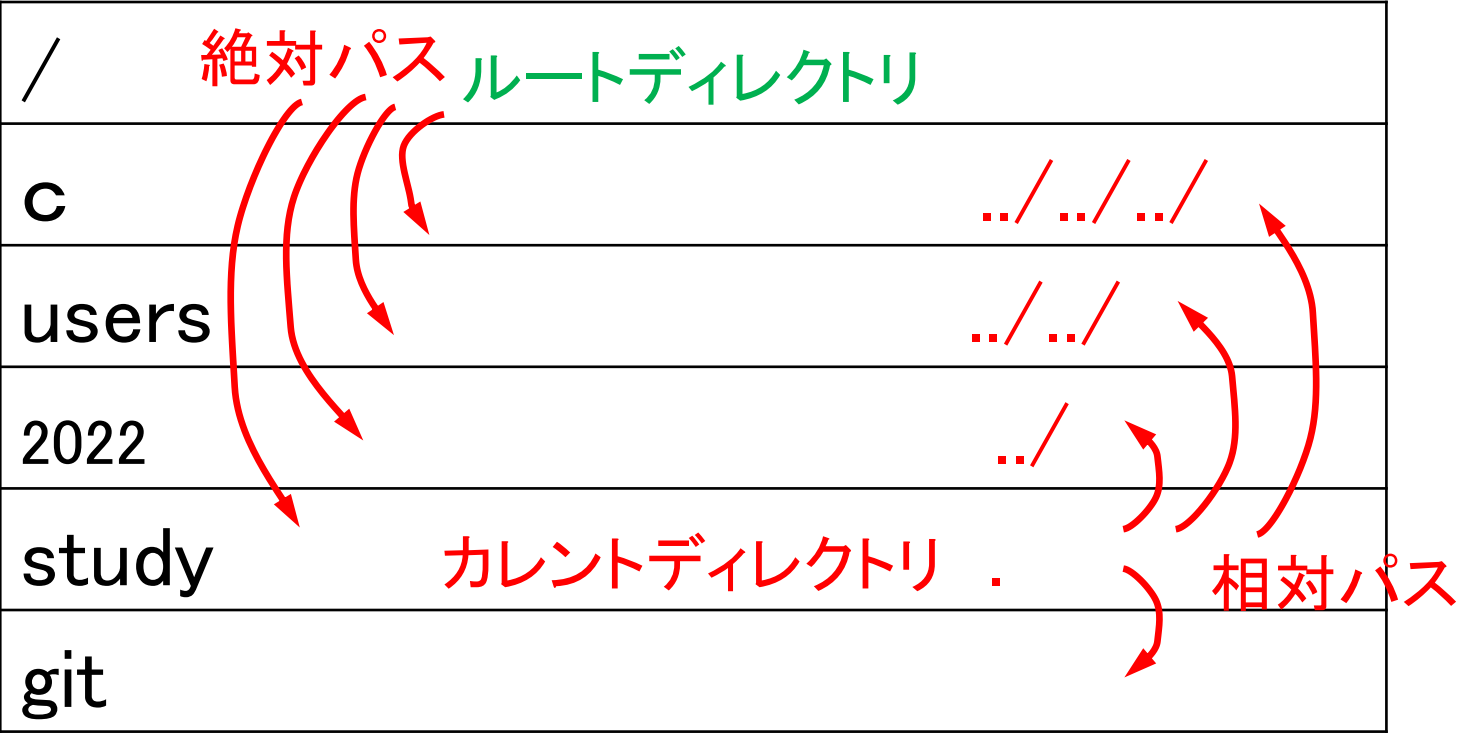
```
$ pwd
/c/Users/ 2022
```

コマンド `mkdir` ディレクトリを作成

```
$ mkdir study
```

コマンド `cd` ディレクトリを移動

```
$ cd study
2022  20220810  MINGW64 ~/study
$ pwd
/c/Users/2022 /study
```



②③ユーザー名設定

```
$ git config --global user.name 2022 -g-2
```

②④メールアドレス設定

```
$ git config --global user.email test@example.com
```

```
$ git config --list
diff.astextplain.textconv=astextplain
filter.lfs.clean=git-lfs clean -- %f
filter.lfs.smudge=git-lfs smudge -- %f
filter.lfs.process=git-lfs filter-process
filter.lfs.required=true
http.sslbackend=openssl
http.sslcainfo=C:/Program Files/Git/mingw64/ssl/certs/ca-bundle.crt
core.autocrlf=true
core.fscache=true
core.symlinks=false
pull.rebase=false
credential.helper=manager-core
credential.https://dev.azure.com.usehttppath=true
init.defaultbranch=master
user.name= 2022 -g-2
user.email=test@example.com
```

Visual Studio Codeをエディターに用います。
自動で切り替えるように設定しておきます。

```
$ git config --global core.editor "code --wait"
```

```
$ git config core.editor  
code --wait
```


グラフィカル画面 GUI(Graphical User Interface)を使用したい場合

プロンプトで操作する場合は、CUI(Character User Interface)

<https://git-scm.com/downloads/guis> のGUI紹介ページにアクセス



About

Documentation

Downloads

GUI Clients

Logos

Community

The entire [Pro Git book](#) written by Scott Chacon and Ben Straub is available to read [online for free](#). Dead tree versions are available on [Amazon.com](#).

GUI Clients

Git comes with built-in GUI tools for committing ([git-gui](#)) and browsing ([gitk](#)), but there are several third-party tools for users looking for platform-specific experience.

If you want to add another GUI tool to this list, just [follow the instructions](#).

All

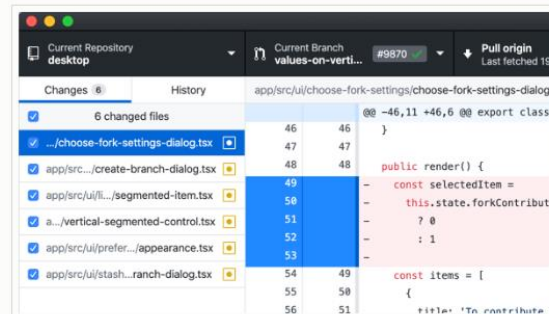
Windows

Mac

Linux

Android

iOS

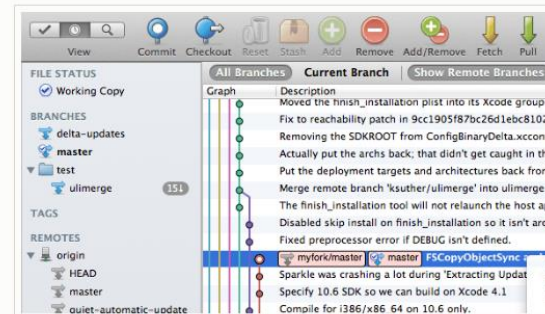


GitHub Desktop

Platforms: Mac, Windows

Price: Free

License: MIT



SourceTree

Platforms: Mac, Windows

Price: Free

License: Proprietary