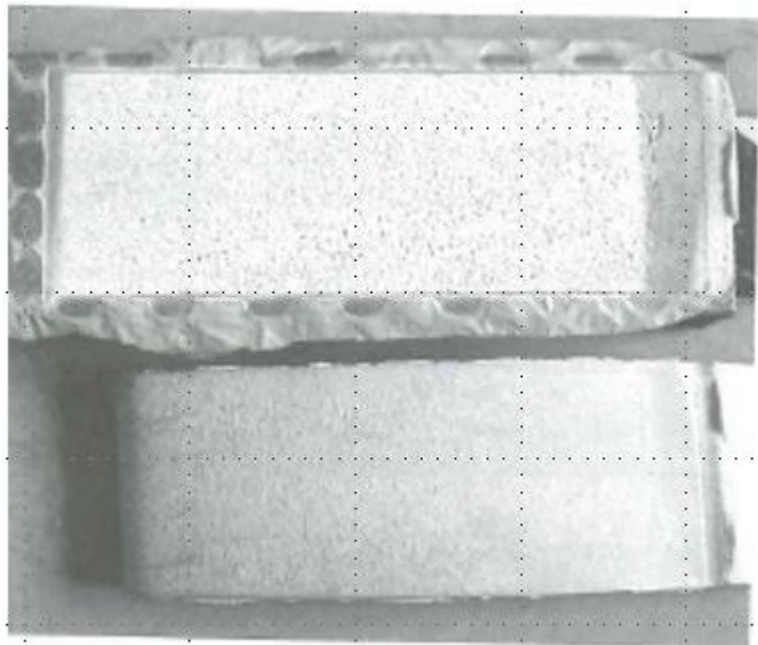
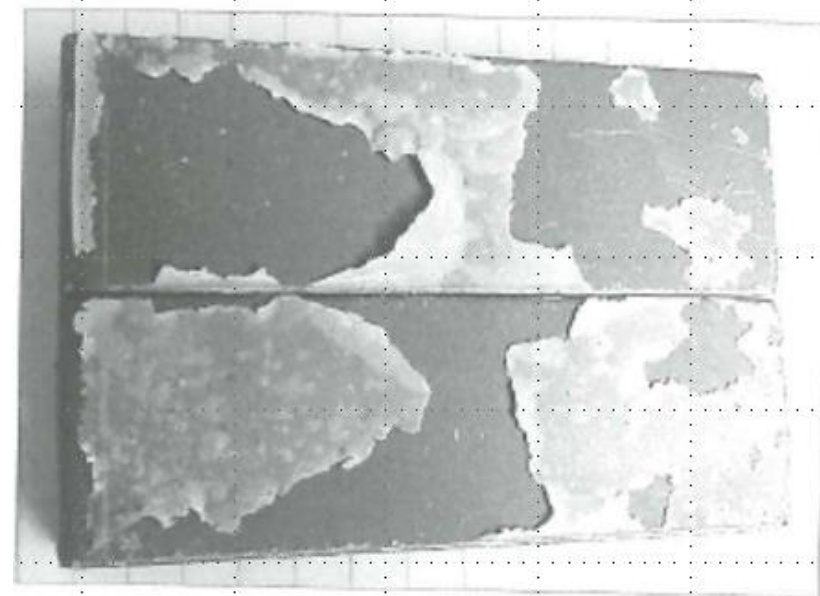
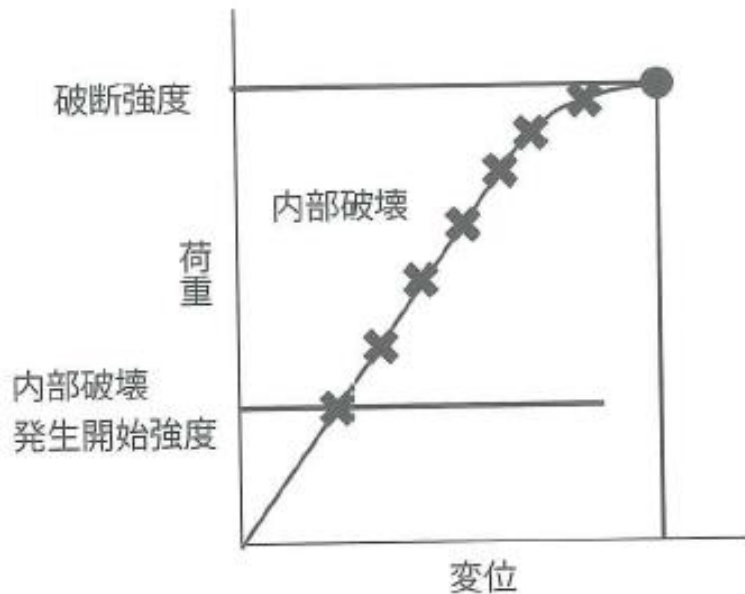


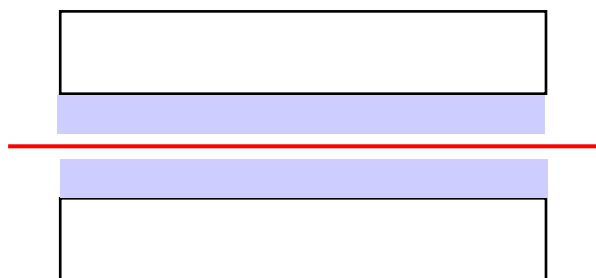
# 接着の破壊箇所



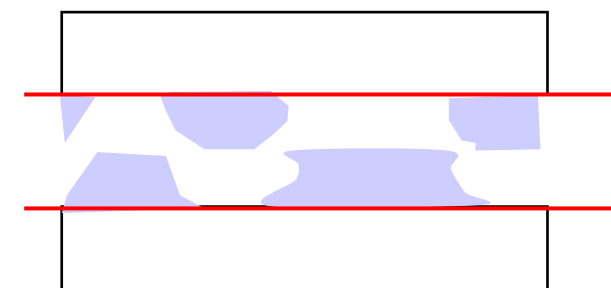
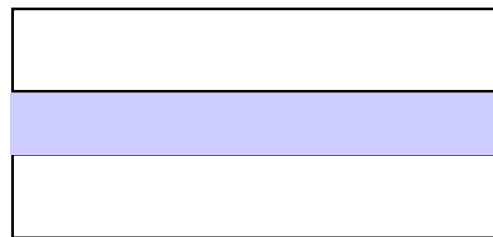
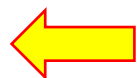
(A) 凝集破壊



(B) 界面破壊

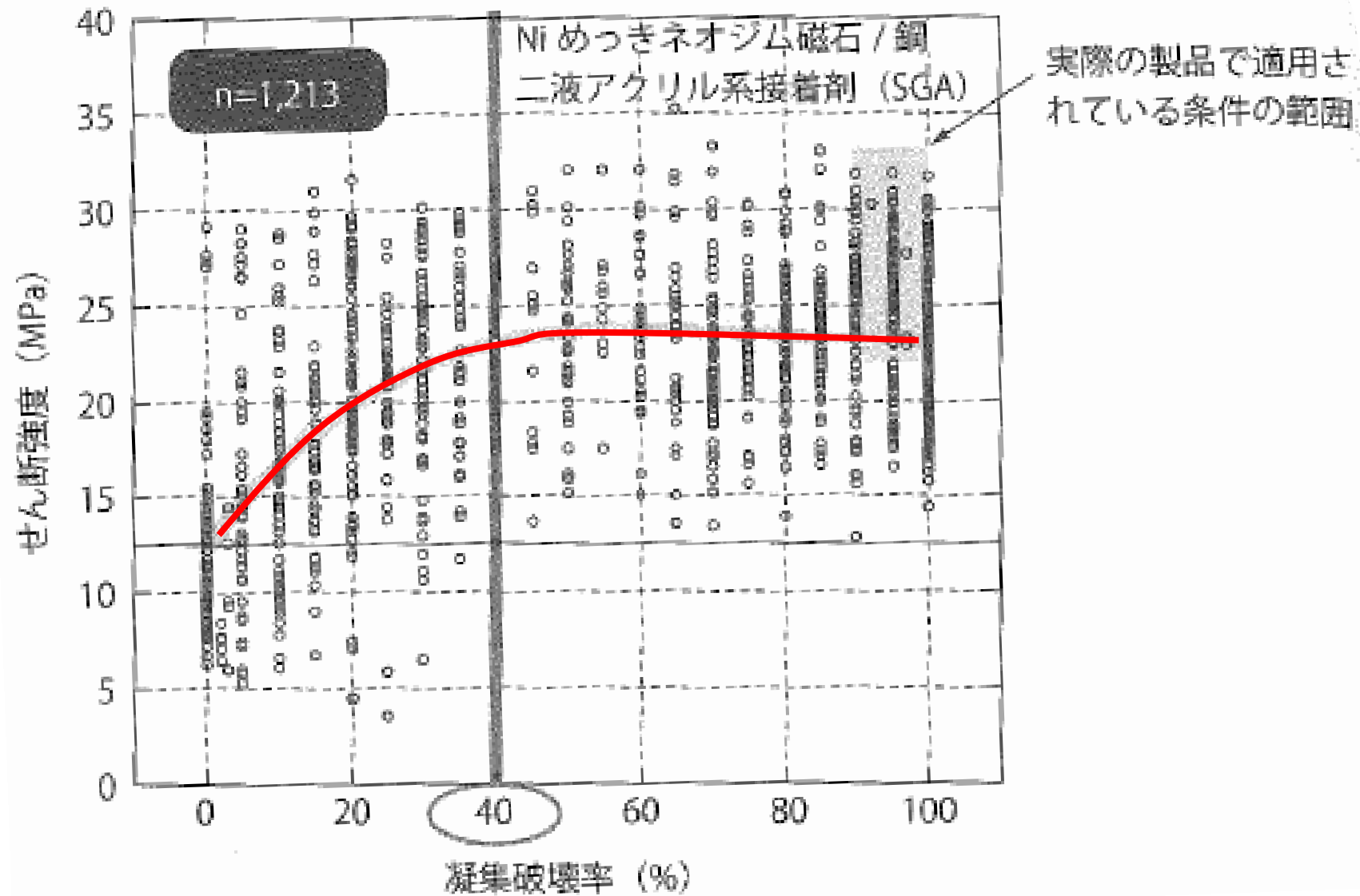


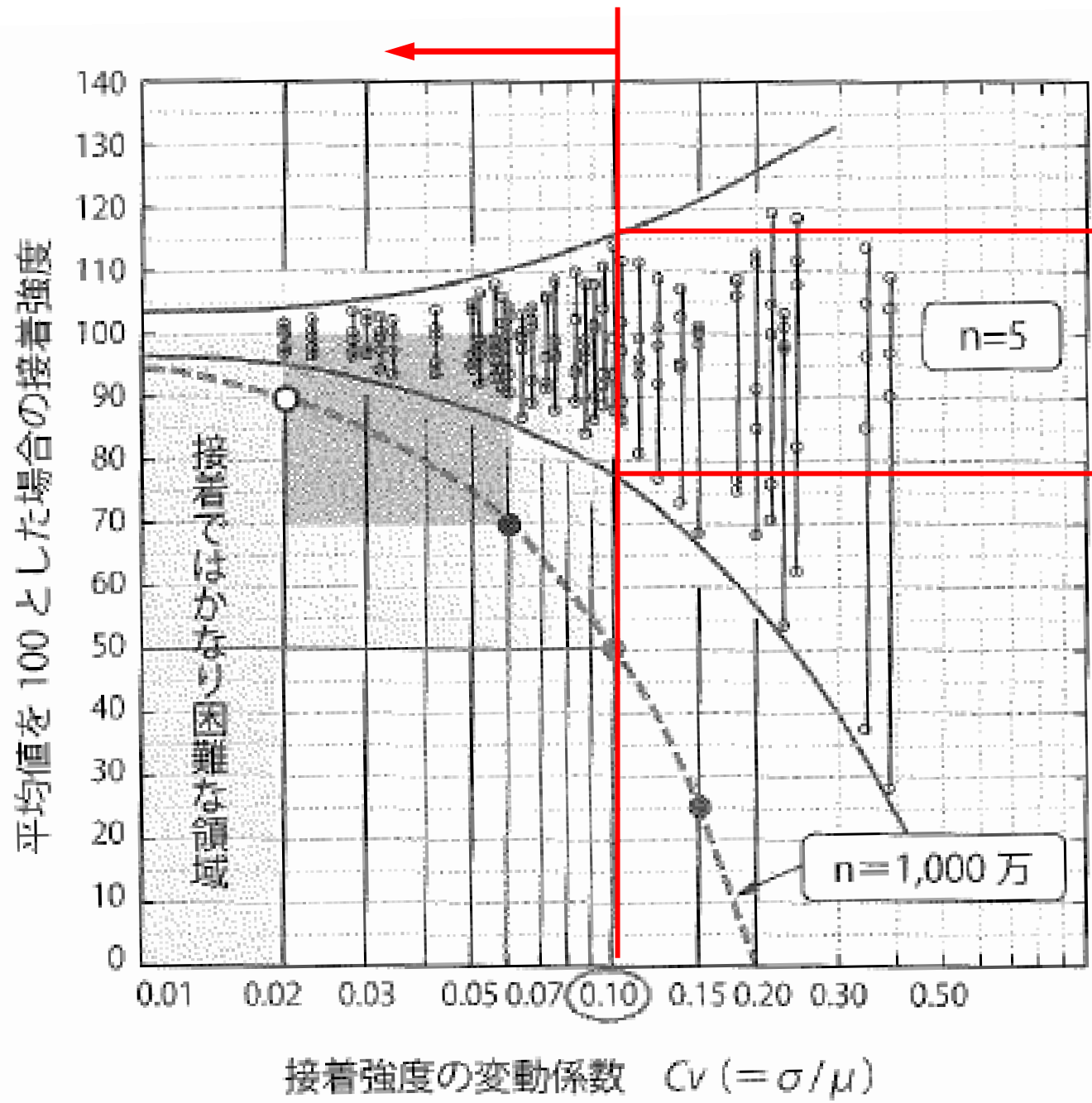
接着層内で破壊



被接着物界面で破壊

# 凝集破壊率40%以上あればよさそう？





約±20%

変動係数  $C_v = \frac{\sigma}{\mu}$

$\sigma$ : 標準偏差  
 $\mu$ : 平均値